



Bicycle Ranch

TUCSON ARIZONA

ELL GROUP

REAL ESTATE · INSURANCE

IRONWOOD
DERMATOLOGY



Bicycle Ranch Tucson Kino Criterium

Sunday March 13th 2022

USAC Rules Apply - Held under USAC Permit: 2022-5171

Bicycle Ranch Tucson Racing p/b Ell Group Real Estate is proud to present the Bicycle Ranch Tucson Kino Criterium! 0.8 miles (1.2 km) of smooth, flat pavement featuring a 9-corner hour-glass circuit running counter-clockwise. Race is held rain or shine.

Registration:

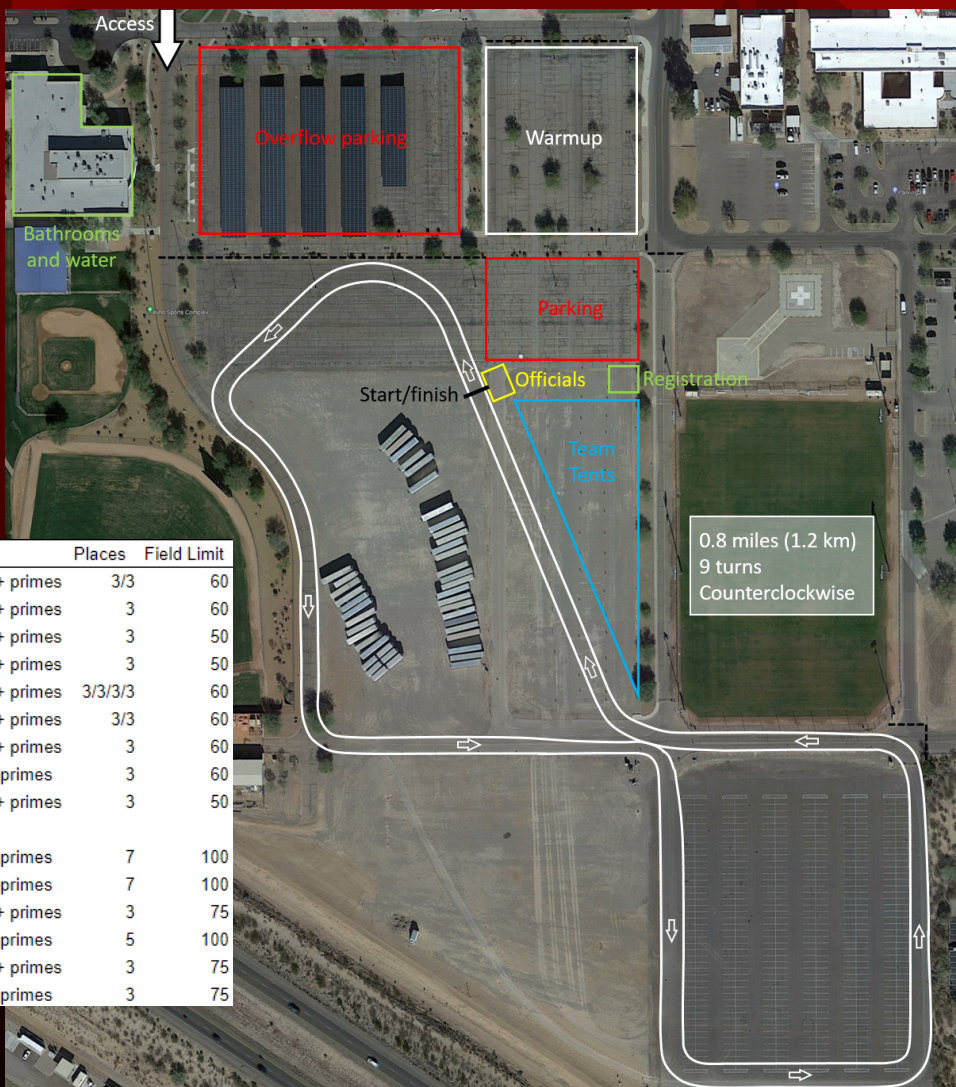
BikeReg

Location: Kino Sports Complex (North), Tucson, AZ - 2500 E Ajo Way

Registration: @ BikeReg.com (no day-of or mail-in registrations)

Additional race(s): \$10 each

Contact: Bern Velasco (BRTcrit@gmail.com)



Category	Duration	Start Time	Entry Fee	Prize	Places	Field Limit
Masters Men 55+/65+ (all cats)*	30	720	\$35	merch + primes	3/3	60
Women Masters 40+ (all cats)	30	800	\$35	merch + primes	3	60
Men Cat 5 (Novice)	30	840	\$35	merch + primes	3	50
Women Cat 5 (Novice)	30	920	\$35	merch + primes	3	50
Juniors Girls & Boys 9-12/12-14*	30	921	\$15	merch + primes	3/3/3/3	60
Juniors Boys 15-16/17-18*	30	1000	\$15	merch + primes	3/3	60
Juniors Girls 15-18	30	1040	\$15	merch + primes	3	60
Women Cat 3/4	30	1041	\$35	\$100 + primes	3	60
Masters Men 35+ Cat 4/5	30	1120	\$35	merch + primes	3	50
LUNCH BREAK	30	1150				
Men P12	60	1220	\$35	\$500 + primes	7	100
Women P123	60	130	\$35	\$500 + primes	7	100
Men Cat 4	35	240	\$35	merch + primes	3	75
Men Cat 2/3	55	325	\$35	\$200 + primes	5	100
Men Masters 40+ Cat 1-4	35	430	\$35	merch + primes	3	75
Men Cat 3/4	45	515	\$35	\$100 + primes	3	75

*scored separately

